

High performance IR camera for entry level
with upgraded visual camera

HotFind-V

High frame rate in real time

HOTFIND-V series adopts either NTSC(60Hz) or PAL(50Hz) composite video output. The thermal image is taken in real time, and no lagging will be found, which guarantees the complete and vivid thermal image, most importantly, no single detail or problem will be overlooked.

Extendable temperature range

Objects of different temperatures require corresponding temperature ranged infrared cameras. HOTFIND-V series has four temperature ranges. It can be extended from standard +250°C to +1500°C, which means the HOTFIND-V series can be widely used in various applications.

Four Spot analysis, auto tracking

HOTFIND-V series has four movable spots, with which you can measure four different points in one thermal image simultaneously, making it easier for users' comparison. Auto tracking can find the spot with the highest or lowest temperature offering clear indication of the spot.

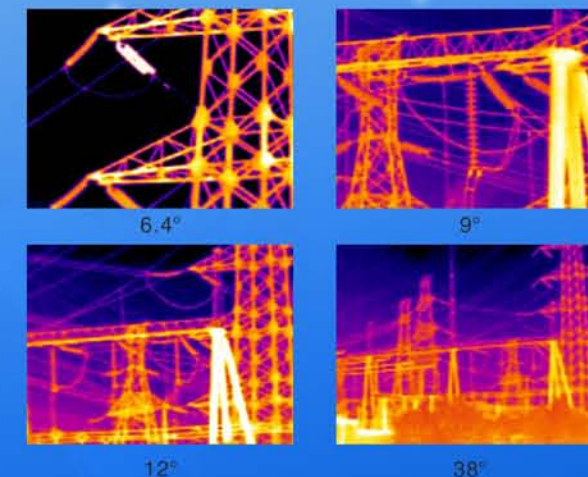
Bluetooth

Users can add voice annotation to the thermal image via Bluetooth. The voice annotation can be saved with the analysis software making it easier for post analysis.



Various optional lenses

Flexible design of the lens means the HOTFIND-V series can adopt various optional lenses with different FOV. All lenses are field replaceable. With such optional lenses, HOTFIND-V series can provide users with different thermal image effects at the same distance and position.



USB real time thermal video recording (optional)

HOTFIND-V series can take not only thermal images, but also thermal video with the USB Real-time software, thermal video can be transferred to the PC in real time for analysis and playback.

Rubber sunshield

In order to reduce the reflection of sunlight when working outdoor, rubber sunshield is provided to minimize the reflection, allowing the best observation result.



Video out



DC in

The DC input can not only provide power to the HOTFIND-V series for long periods of operation, but also charge the battery directly without the need for using the battery charger.

Removable Mini SD card, 2GB for standard delivery



Type	HotFind-VN	HotFind-VT	HotFind-VG
Image performance			
FOV/Min.focus distance	20° x15°/0.1m	20° x15°/0.1m	20° x15°/0.1m
Spatial resolution	2.2 mrad	2.2 mrad	2.2 mrad
Thermal sensitivity	≤0.08°C@30°C	≤0.08°C@30°C	≤0.08°C@30°C
Detector type	UFPA	UFPA	UFPA
Resolution	160 x120	160 x120	160 x120
Spectral range	8-14um	8-14um	8-14um
Focus	Manual	Manual	Manual
Image presentation			
Image mode	IR only	IR/CCD/Duo-vision	IR/CCD/Duo-vision
LCD Display	3.5" TFT screen	3.5" TFT screen	3.5" TFT screen
Digital camera	Not available	640 x 480 full color	640 x 480 full color
Viewfinder	N/A	N/A	N/A
Video output	NTSC (60Hz) or PAL (50Hz) composite video	NTSC (60Hz) or PAL (50Hz) composite video	NTSC (60Hz) or PAL (50Hz) composite video
Temperature			
Measurement range	-20°C ~ +250°C , up to +1500°C(optional)	-20°C ~ +250°C , up to +1500°C (optional)	-20°C ~ +250°C , up to +1500°C (optional)
Accuracy	±2°C,±2% of readings	±2°C,±2% of readings	±2°C,±2% of readings
Correction	Emissivity, ambient temperature, distance,	Emissivity, ambient temperature, distance, relative humidity	Emissivity, ambient temperature, distance, relative humidity
Measurement mode	1 movable spot, auto hot/cold spot	4 movable spots, auto hot/cold spot, isotherm	9 movable spots, auto hot/cold spot,
Delta T	Yes	Yes	Yes
Alarm	Yes	Yes	Yes
Image storage			

Type	2GB removable MiniSD card	2GB removable MiniSD card	2GB removable MiniSD card
File format- Thermal	.SAT	.SAT	.SAT
File format- Visual	.CCD	.CCD	.CCD
Thermal video record	N/A	N/A	N/A
Annotation	No	No	Voice annotation via Bluetooth
Battery system			
Working voltage	DC 8V-11V	DC 8V-11V	DC 8V-11V
Battery operating time	2.5 hours	2.5 hours	2.5 hours
Environment			
Operating temperature	-20°C to +50°C	-20°C to +50°C	-20°C to +50°C
range	-40°C to +70°C	-40°C to +70°C	-40°C to +70°C
Humidity	condensing	10% to 95%, non-condensing	10% to 95%, non-condensing
Encapsulation	IP54	IP54	IP54
Shock (operational)	25G	25G	25G
Vibration (operational)	2G	2G	2G
Physical characteristic			
Weight	Less than 600g	Less than 600g	Less than 600g
Size	215 mm ×80mm ×219mm	215 mm ×80mm ×219mm	215 mm ×80mm ×219mm
Tripod mounting	1/4" _20	1/4" _20	1/4" _20
Other			
Illuminator	No	Yes	Yes
Laser pointer	No	Yes	Yes
USB2.0 transfer realtime thermal data	No	No	Yes
Bluetooth interface/GPS/Wifi	No	No	Yes
Available optional lenses	6.4°, 9°, 28°, 38°	6.4°, 9°, 28°, 38°	6.4°, 9°, 28°, 38°