



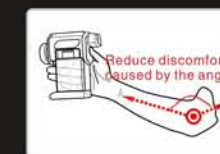
Up-right styling infrared camera



SAT-S280

- 3.5 inch full color swivelable LCD display;
- Innovative up-right styling design;
- Removable SD card (2GB), up to 16G;
- Various optional lenses available, field exchangeable;
- Non-radiometric thermal video saving;
- Real-time radiometric data transferring;

Innovative up-right styling design
 With up-right styling design, S280 can effectively reduce the stress brought by heavy workload, and avoid discomfort caused by the angle formed by the elbow and the wrist.



USB 2.0 radiometric thermal video transferring in real time

The thermal data can be transferred through USB2.0 interface to PC in real time by the software for analysis and reporting.

Thermal video recording

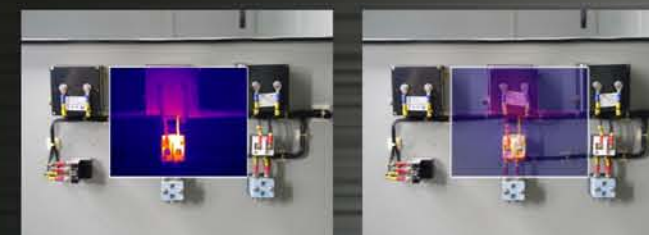
S280 can record the real time non-radiometric thermal video to the SD card. The users can save thermal video totaling 10 hours to the 2GB SD card. The thermal video is in Mpeg format that can be played by general video player.

Duo vision

S280 can take high quality "Duo vision" images, with four display modes; users can choose the most suitable mode for their application.



3.5 inch LCD can be swiveled for 270deg, making it easier for users to adjust to the best angle for observation.



Innovative design for comfort and precise measurement

Type	S280-S	S280-P
Image performance		
FOV/Min.focus distance	24° x18°/0.5m	24° x18°/0.5m
Spatial resolution	1.3 mrad	1.3 mrad
Thermal sensitivity	≤0.05°C@30°C	≤0.05°C@30°C
Detector type	UFPA	UFPA
Resolution	384x288	384x288
Spectral range	8-14um	8-14um
Focus	Manual	Manual
Image presentation		
Image mode	IR/CCD/Duo-vision	IR/CCD/Duo-vision
LCD Display	3.5" TFT screen	3.5" TFT screen
Digital camera	640 x 480 full color	640 x 480 full color
Viewfinder	640 x 480 full color	640 x 480 full color
Video output	NTSC (60Hz) or PAL (50Hz) composite video	NTSC (60Hz) or PAL (50Hz) composite video
Temperature measurement		
Measurement range	-20°C ~ +600°C, up to +2000°C(optional)	-20°C ~ +600°C, up to +2000°C(optional)
Accuracy	±2°C, ±2% of readings	±2°C, ±2% of readings
Measurement mode	5 movable spots, auto hot/cold spot, 1 area box, isotherm	9 movable spots, auto hot/cold spot, profile, 5 area boxes, isotherm
Correction	Emissivity, ambient temperature, distance, relative humidity	Emissivity, ambient temperature, distance, relative humidity
Delta T	Yes	Yes
Alarm	Yes	Yes

Image storage		
Type	2GB removable SD card	2GB removable SD card
File format- Thermal	.SAT	.SAT
File format- Visual	.CCD	.CCD
Thermal video record	No	Yes
Annotation	No	Yes
Battery system		
Working voltage	DC 8V-11V	DC 8V-11V
Battery operating time	2.5 hours	2.5 hours
Environment specification		
Operating temperature range	-20°C to +50°C	-20°C to +50°C
Storage temperature range	-40°C to +70°C	-40°C to +70°C
Humidity	10% to 95%, non-condensing	10% to 95%, non-condensing
Encapsulation	IP54	IP54
Shock (operational)	25G	25G
Vibration (operational)	2G	2G
Physical characteristic		
Weight	980g	980g
Size	160mm X 90mm X 184mm	160mm X 90mm X 184mm
Tripod mounting	1/4" _20	1/4" _20
Other		
Illuminator	Yes	Yes
Laser pointer	Yes	Yes
USB2.0 transfer realtime thermal data	No	Yes
Bluetooth	No	Yes
Network interface/GPS/Wifi	No	No
Available optional lenses	close-up, 12°, 48°	close-up, 12°, 48°