

SAT-VS640

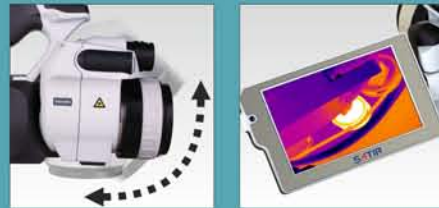


- Revolutionary Ergonomic Design**
- High Resolution 640*480 Detector**
- 5 inch LCD Touch Screen**
- Multi-angle Camera Head with Viewfinder**
- Ethernet Interface Access**
- WiFi Technology Embedded**
- Build-in GPS Locator**



5 inch LCD with touch screen

- 5 inch LCD enables the user to see very fine detail;
 - Touch screen makes work more efficient and straightforward;
 - 270deg rotatable design provides the best observation angle;
 5 inch full color LCD is equipped with the VS640, users can view the exquisite thermal image or the visual image comfortably and clearly; brand new iconic menu makes for easy operation, together with touch screen, inspection work becomes more efficient.



High resolution UFPA detector

VS640 has a 640*480 resolution detector. Every pixel brings an accurate and reliable temperature measurement result.



Built-in image and video player

Built-in image and video player is an important feature for VS640. It is convenient for users to watch the images and videos freely.



Duo vision

VS640 can take high quality "Duo vision" images, with four display modes; users can choose the most suitable mode for their application.

- High resolution UFPA detector;
- 5 inch LCD with touch screen;
- Built-in image and video player;
- Built-in Bluetooth module with Bluetooth Headset;
- Interface to access the network through a wired Ethernet;
- Wireless Wi - Fi network access;
- GPS positioning to record the place of shooting a picture;



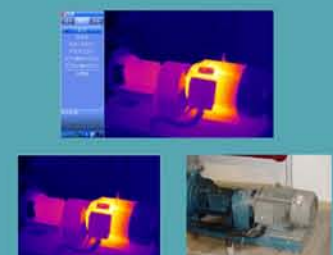
Brandnew operating interface



Thermal images preview system



Built-in image and video player



DuoVision and PIP display mode

Type	VS640
Image performance	
FOV/Min.focus distance	24° x18°/0.5m
Spatial resolution	0.65mrad
Thermal sensitivity	≤0.06°C@30°C
Detector type	UFPA
Resolution	640X480
Spectral range	8-14um
Focus	Manual, Motorized, Auto-focus
Image presentation	
Image mode	IR/CCD/Duo-vision
LCD Display	5" TFT touch screen
Digital camera	640 x 480 full color
Viewfinder	640 x 480 full color
Video output	NTSC (60Hz) or PAL (50Hz) composite video
Temperature measurement	
Measurement range	-20°C ~ +600°C, up to +2000°C(optional)
Accuracy	±2°C, ±2% of readings
Measurement mode	10 spots, auto hot/cold spot, profile, 5 areas, 2 Isotherms
Correction	Emissivity, ambient temperature, distance, relative humidity
Delta T	Yes
Alarm	Yes
Image storage	
Type	2 GB removable SD card
File format- Thermal	.JPG
File format- Visual	.JPG

Thermal video record	Yes, MPEG format
Annotation	Text & Voice via bluetooth
Battery system	
Working voltage	DC 8V-11V
Battery operating time	2 hours
Environment specification	
Operating temperature range	-20°C to +50°C
Storage temperature range	-40°C to +70°C
Humidity	10% to 95%, non-condensing
Encapsulation	IP54
Shock (operational)	25G
Vibration (operational)	2G
Physical characteristic	
Weight	1750g
Size	265mm X 110mm X 160mm
Tripod mounting	1/4" _20
Other	
Illuminator	Yes
Laser pointer	Yes
USB2.0 transfer realtime thermal data	Yes
Bluetooth	Yes
Network interface/GPS/Wifi	Yes
Available optional lenses	12°, 48°